

Ordering Information

TPH Spectra® ST

Universal Composite Restorative

Introductory Kit—Low-Viscosity (LV) 642000

40 LV Compules® Tips (Blue) Assorted (0.25g each)
 5 shade A1
 10 shade A2
 10 shade A3
 5 shade A3.5
 5 shade A4
 5 shade BW
 Compules® Tips Gun
 Shade Guide
 i-shade label

Introductory Kit—High-Viscosity (HV) 642004

40 HV Compules® Tips (Gray) Assorted (0.25g each)
 5 shade A1
 10 shade A2
 10 shade A3
 5 shade A3.5
 5 shade A4
 5 shade BW
 Compules® Tips Gun
 Shade Guide
 i-shade label

Low-Viscosity (LV) Refills

Shades	Compules® Tips (20 x 0.25g)	Syringe (1 x 3g)
A1 (=VITA® shades A1; B1; C1)	642220	642460
A2 (=VITA® shades A2; B2; D2)	642221	642461
A3 (=VITA® shades A3; C2; D3; D4)	642222	642462
A3.5 (=VITA® shades A3.5; B3; B4; C3)	642223	642463
A4 (=VITA® shades A4; C4)	642224	642464
BW (Bleach White)	642225	

High-Viscosity (HV) Refills

Shades	Compules® Tips (20 x 0.25g)	Syringe (1 x 3g)
A1 (=VITA® shades A1; B1; C1)	642231	642470
A2 (=VITA® shades A2; B2; D2)	642232	642471
A3 (=VITA® shades A3; C2; D3; D4)	642233	642472
A3.5 (=VITA® shades A3.5; B3; B4; C3)	642234	642473
A4 (=VITA® shades A4; C4)	642235	642474
BW (Bleach White)	642236	

Compules® Tips Gun

1 Compules® Tips Gun

635105

Shade Guide Refill

1 shade guide holder
 9 shade guide tabs (A1, A2, A3, A3.5, A4, BW, D1, D3, E1)

642013

To learn more about the TPH Spectra® ST portfolio, visit
www.dentsplysirona.com/TPHSpectraST-composites

For more information, visit
<https://bit.ly/35kA0an>

Contact your Dentsply Sirona Territory Manager for more information:

©2019 Dentsply Sirona Inc. All rights reserved. VITA® is not a registered trademark of Dentsply Sirona.
 ML420173B (12-4-19)



TPH Spectra® ST Effects

Universal Composite Restorative

Introductory Kit—High-Viscosity (HV) 642542

28 HV Compules® Tips (Gray) Assorted (0.25g each)
 12 shade D1
 8 shade D3
 8 shade E1
 Illustrated Technique Guide
 i-shade label

HV Refills

Shades	Compules® Tips (16 x 0.25g)	Syringe (1 x 3g)
D1 (use with A1; A2)	642543	642546
D3 (use with A3; A3.5; A4)	642544	642547
E1 (use with A1; A2; A3; A3.5; A4)	642545	642548

Shade Guide Expansion Pack

3 shade guide tabs (D1; D3; E1) 642549

TPH Spectra® ST flow

Flowable Composite Restorative

Refills

Shades	Compula® Tips (16 x 0.25g)	Syringe (1.8g + 25 tips)
A1 (=VITA® shades A1; B1; C1)	642511	642521
A2 (=VITA® shades A2; B2; D2)	642512	642522
A3 (=VITA® shades A3; C2; D3; D4)	642513	642523
A3.5 (=VITA® shades A3.5; B3; B4; C3)		642525
A4 (=VITA® shades A4; C4)		642524
BW (Bleach White)		642526
D1 (Opaque Dentin)		642527
D3 (Opaque Dentin)		642528
E1 (Translucent Enamel)		642529

Syringe Tips Refill

50 syringe tips 642530



TPH Spectra® ST Effects

Complex anterior cases, simplified.

TPH Spectra® ST

Your most common cases, covered.

Efficient esthetics with TPH Spectra® ST composites.



TPH Spectra® ST flow

Efficient esthetic flowable versatility.

©2020 Dentsply Sirona. All rights reserved.



Our decades of innovation in composite materials taught us what matters most to dentists.



Handling



Esthetics



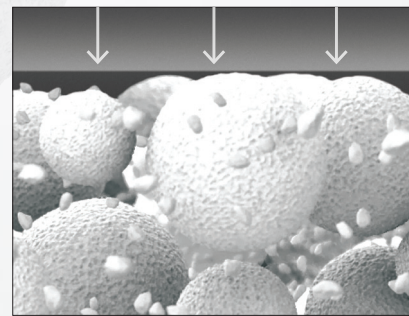
Longevity

SphereTEC® Filler Technology

Magnification of a 15 micron diameter SphereTEC® filler particle

TPH Spectra® ST composites excel where it counts thanks to SphereTEC® filler technology.

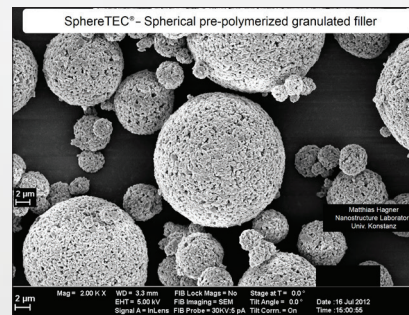
Key improvements to the TPH Spectra® ST composite family were made possible with SphereTEC® filler technology. The SphereTEC® fillers' morphology, particle size distribution, and surface microstructure deliver the benefits that matter most to dentists.



Optimized Handling

Easy handling is essential to placement efficiency. The shape and size distribution of SphereTEC® fillers creates a ball-bearing like effect that enables excellent adaptation and sculptability. And they bind more free resin than usual fillers to avoid stickiness.

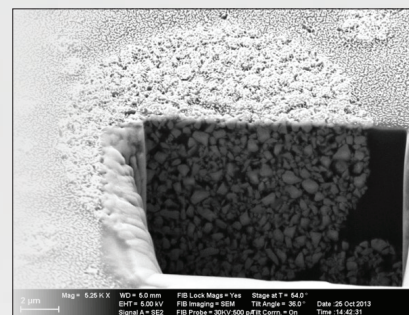
SPHERICAL



Simplified Esthetics

Natural esthetics should be easy to create. SphereTEC® fillers are uniquely constructed to balance opacity, translucency, light absorption, and scattering for an excellent chameleon effect. Their microstructure enables a fast polish to a high gloss.

MICRO-SCALED



Reliable Longevity

Durable results promote profitability and reputation. High filler packing density plus micro-mechanical locking of our resin and fillers deliver material strength and durability. And our resin infiltrated, prepolymerized filler design enables sophisticated stain resistance.

SUPERSTRUCTURES

Simplify every restoration with TPH Spectra® ST composites featuring SphereTEC® technology

Your most common cases, covered.



TPH Spectra® ST Universal Composite Restorative

Experience the ease of optimized handling in your ideal viscosity with five universal CLOUD shades that cover the full VITA®1 range.



Complex anterior cases, simplified.



TPH Spectra® ST Effects Universal Composite Restorative

Featuring two additional opacities that work together in a simplified layering system with 5 TPH Spectra® ST universal CLOUD shades.



Efficient esthetic flowable versatility.



TPH Spectra® ST flow Flowable Composite Restorative

Versatile flow-on-demand handling with shades perfectly matched to our universal composite portfolio.



1. VITA® is not a registered trademark of Dentsply Sirona.

Your preferred handling

Two Universal Composite Handling Options

Thanks to SphereTEC® filler technology, TPH Spectra® ST composite offers optimized handling in a creamy and spreadable low viscosity or a firm and packable high viscosity to accommodate your preference and technique for placement efficiency.

- Doesn't stick to hand instruments
- Adapts easily to cavity surfaces
- Easy to sculpt and shape
- Excellent slump resistance



74%

of dentists complain about handling properties of composites such as adaptability and stickiness.²

Versatile Flowable Composite Handling

For traditional flowable indications in the smile line, TPH Spectra® ST flow material enables the esthetic performance and durability you expect from a SphereTEC® based composite in flowable form.

- Flow-on-demand handling
- Excellent cavity adaptation
- Stays where placed until instrumentation initiates flow



66%

of dentists use traditional flowables for Class Vs. On average, 1/4 of Class V restorations are in the anterior.³

Simplified esthetics

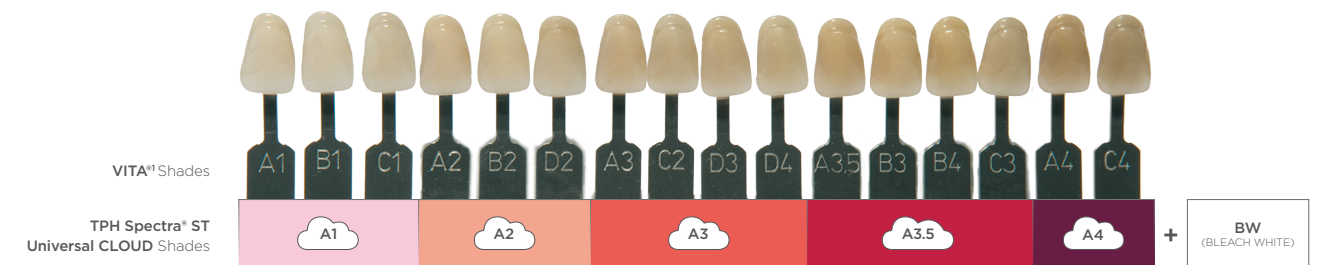
Universal CLOUD shades for common cases

SphereTEC®'s primary filler particles and resin together enable an excellent chameleon effect for simplified shade matching. One Universal CLOUD shade is all you need for the majority of cases.

88%

of dentists are stocking more than five VITA shades.^{1,4}

- 5 universal CLOUD shades cover the full VITA® range
- Reliable, accurate shade match to surrounding tooth structure
- Save money and shelf space by reducing inventory
- BW shade available for bleach white restorations



Plus dentin and enamel shades for complex anterior cases

For esthetically demanding anterior cases, TPH Spectra® ST Effects and TPH Spectra® ST Universal CLOUD shades work together in a simplified layering technique.

Over **1/3**

of clinicians consider color matching to be the most challenging aspect of Class IV restoration.⁵

- Select one of two dentin effects shades for added opacity
- One enamel effect shade for a highly translucent incisal edge
- Simple recipes and technique for advanced esthetic results



2. Dentsply Sirona Restorative, Europe composite user survey 2015, n=297.
3. Dentsply Sirona Flowable Composite user study August 2018.

4. Aegis communications 2016 direct restorative survey (n=107).
5. 2018 The Key Group, Inc.