



F O R M

Remarkable pen-style design that feels balanced in the hand and beautiful in its details



Multifunctional charging base

The SmartLite[®] Pro comes with a modern-design charging base with a built-in Radiometer and room for extra tips. The intuitive battery management system includes two quick connect batteries for constant availability. The latest generation LiFePO₄ battery technology ensures a full day of clinical operation with only one charge.

Ordering Information

- 644400** SmartLite[®] Pro Introductory Kit
 - 1 x Handpiece
 - 1 x Cure Tip
 - 1 x Transillumination Tip
 - 2 x Batteries
 - 1 x Charging Base
 - Accessories
- 644401** SmartLite[®] Pro Battery Refill
- 644402** SmartLite[®] Pro Sleeves Refill
- 644403** SmartLite[®] Pro Eye Protection Shields Refill
- 644404** SmartLite[®] Pro Power Connector Refill
- 644405** SmartLite[®] Pro Transillumination Tip Refill
- 644406** SmartLite[®] Pro PolyCure Tip Refill
- 644407** SmartLite[®] Pro Cure Tip Refill
- 644408** SmartLite Pro O-Ring Refill

Dentsply Sirona grants a 2-year warranty on all components of the SmartLite Pro Curing Light except the battery. The battery is covered by a 1-year warranty.



CLINICAL PERFORMANCE NEVER LOOKED SO GOOD.

NEW! SmartLite[®] Pro
Modular LED Curing Light



For more information visit www.dentsplysirona.com

Find us on www.facebook.com/dentsplysirona.restorative

ML440002B (4/30/19)
© Dentsply Sirona 1/2019

THE DENTAL SOLUTIONS COMPANY™



More than just a curing light

We weren't satisfied with creating one of the most advanced curing lights ever. It had to be one of the best-designed as well. The SmartLite® Pro curing light is a unique modular device in a remarkable, all-metal housing. But it delivers far more than good looks. State of the art optics provide leading quality of cure for reliable outcomes. SmartLite® Pro. **Designed to perform.**



⊕ Single-button simplicity

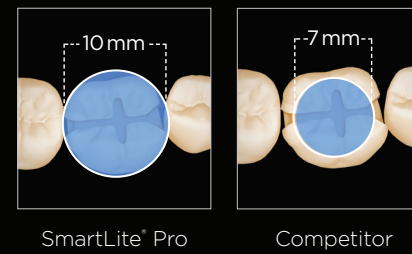
Intuitive one-button operation with audible and tactile signals allows you to focus on what really matters.

⊕ Metal housing

Medical-grade stainless steel and anodized aluminum provide robust durability, year after year.

⊕ Reliable clinical outcomes

Large 10 mm active curing diameter to cover bigger restorations combined with an excellent beam collimation for reliable curing even over larger distances.



SmartLite® Pro: Collimated beam for reliable curing over larger distances.

⊕ Versatility

The SmartLite® Pro features a modular design with interchangeable tips for a variety of clinical indications. These quick connect, 360-degree rotational tips are easy to change. The forward-thinking design also allows for the addition of new tips as technology advances in the future.



⊕ State of the art optics

Optimized 4 LED design provides a uniform light distribution over the whole active curing area. Irradiance: ~1.250 mW/cm²

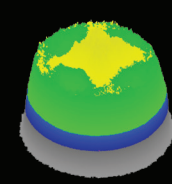
SmartLite® Pro beam profile at 0 mm distance (Blue Light Range)¹

2D Beam Profile



Active Area
10 mm

3D Beam Profile



Active Area
10 mm

Irradiance (mW/cm²)

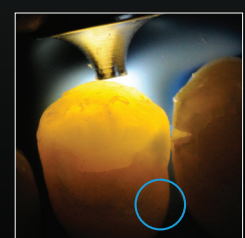


⊕ Transillumination

The additional Transillumination Tip is a diagnostic aid for the visualization of interproximal caries, evaluation of cracked teeth and the illumination of endodontic access. It's sophisticated design includes a 1 mm focused light output with 2 different settings (anterior and posterior).



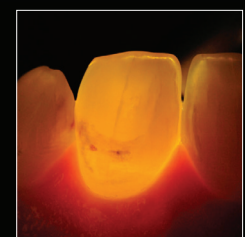
Before



After



Before



After