

# SDR® flow+ Bulk Fill Flowable

## Ordering Information

**61C100 SDR® flow+ Introductory Kit**  
25 Compula Tips (0.25g each) - Universal shade  
Compules® Tips Gun



**61C101 Compula Tips Refill Universal Shade**  
15 Compula Tips Universal shade (0.25g each)



**61C106 A1 Shade**  
**61C107 A2 Shade**  
**61C108 A3 Shade**



**61C103 SDR® flow+ Compula Tips Bulk Refill**  
50 Compula Tips (0.25g each)



**61C130 SDR® flow+ Syringe Refill Universal Shade**  
2x Syringe Universal shade (1g each)  
15x Syringe tips



**61C111 SDR® flow+ Syringe Tip Refill**  
60x Syringe tip



**635105 Compules Tips Gun**  
1 Compules Tips Gun



### Part of the Class II Total Practice Solution



For more information, please call **1-877-393-3687** or visit [class2restorations.com](http://class2restorations.com)

©2018 Dentsply Sirona. All rights reserved.  
LESDFlowplus



## Years of clinical success

While making Class I and Class II restorations faster and easier, the SDR® technology in SDR® flow+ material also shows excellent long-term reliability in several clinical studies. In fact, the long-term survival rates of bulk fill restorations with SDR® technology provided to be equivalent to those of restorations done in the conventional layering technique.

### Split mouth studies by J.W.V van Dijken and U. Pallesen<sup>6,7</sup>

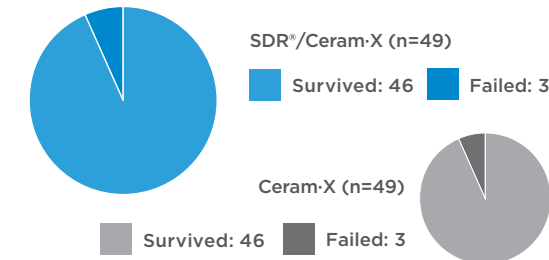
#### 6 YEAR FOLLOW-UP<sup>6</sup>

##### JWV van Dijken and U. Pallesen

A total of 98 Class I and Class II restorations were evaluated at recall. 49 using SDR® and Ceram-X® universal composite in the bulk-fill technique against the same number using just Ceram-X universal composite in the layering technique.

The observers conclude:

- Clinically safe
- Highly acceptable clinical durability
- Clinical performance and failure rate was equivalent to conventional layering (3 restorations each)



"During the six year follow up, the bulk fill technique was proven to be a clinically safe technique; highly acceptable; clinically durable."

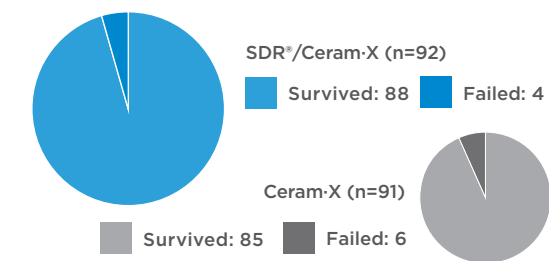
#### 5 YEAR FOLLOW-UP<sup>7</sup>

##### JWV van Dijken and U. Pallesen

A total of 183 Class I and Class II restorations were evaluated at recall. 92 SDR® and Ceram-X universal composite in the bulk-fill technique against 91 using just Ceram-X universal composite in the layering technique.

The observers conclude:

- Both restorative techniques showed good surface, marginal stability and color stability
- No statistically different annual failure rates between bulk-fill and layering technique were observed
- No post-op sensitivities have been observed at all



"The use of a 4mm incremental technique with the flowable bulk-fill resin composite showed during the 5-year follow up slightly better, but not statistical significant, durability compared to the conventional 2mm layering technique in posterior resin composite restorations."<sup>7</sup>

### 36 Month clinical trial results<sup>8</sup> J. Burgess and C. Munoz

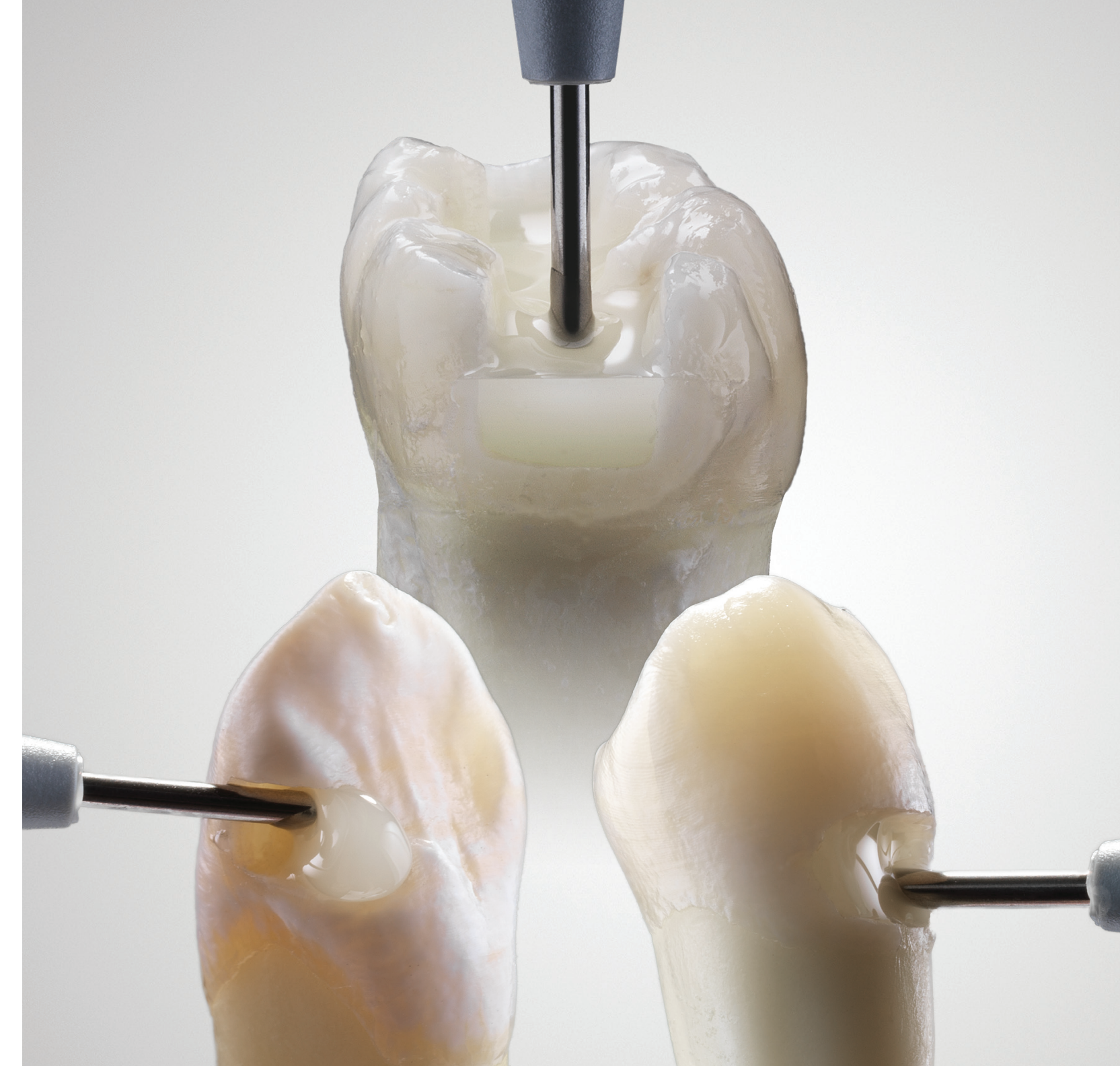
- No failures attributable to SureFil® SDR® flow material
- No post-operative sensitivities
- No adverse effects on gingiva in contact with SureFil® SDR® flow material

"There were no observations of recurrent caries associated with the low stress resin and no reports of adverse events throughout the duration of the trial."<sup>8</sup>

<sup>6</sup> van Dijken JWV, Pallesen U, 2017: Bulk-filled posterior resin restorations based on stress-decreasing resin technology: a randomized, controlled 6-year evaluation.; Eur J Oral Sci. 2017 Aug;125(4):303-309.

<sup>7</sup> van Dijken JWV, Pallesen U, 2016: Posterior bulk-filled resin composite restorations: A 5-year randomized controlled clinical study; J Dent 2016 Aug;51:29-35

<sup>8</sup> Internal report #765-540 (2012-02-17); Data on file



## SDR® flow+ Bulk Fill Flowable

A real leader takes you further.

THE DENTAL SOLUTIONS COMPANY™



# The unmatched SDR® bulk fill technology

SureFil SDR® flow material with SDR® technology was the first product that allowed 4mm bulk placement in Flowable consistency. **More than 50 million applications and several long term clinical studies later**, it is the bulk fill technology of choice for faster and easier creation of reliable restorations.

## New name. Same proven performance.

Dentsply Sirona created the bulk fill flowable category in 2009 with SureFil SDR flow material. The next generation, SureFil® SDR® flow+ material, extended its lead even further by enhancing its formula to allow use in an expanded range of indications while also offering more shades, greater wear resistance, and increased radiopacity. Now the leader in bulk fill flowables keeps its well-proven performance, but with a streamlined new name: **SDR® flow+ material**.

- + Flowability
- + Low Shrinkage Stress
- + Efficiency
- + Radiopacity
- + More Indications
- + Reliable Adhesion
- + Tight Seal

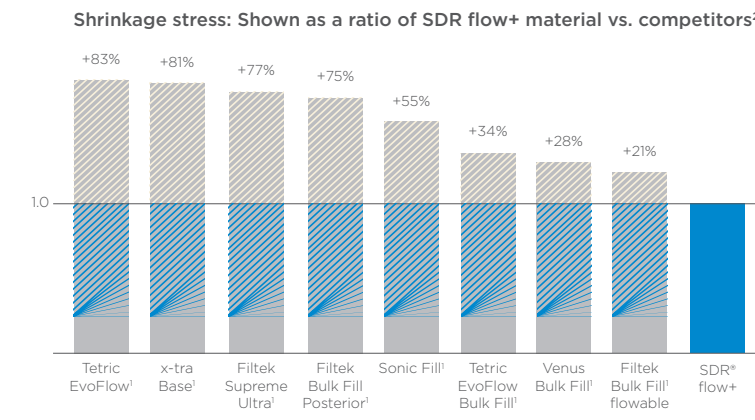
## + Flowability

SDR® flow+ material's unique chemistry helps ensure the longevity and overall quality of a bulk fill restoration. 4mm bulk fill technology is an essential part of ensuring the longevity and overall quality of a bulk fill restoration. SDR® flowable bulk fill technology fills and easily adapts to the cavity, flowing deeply into nooks and crannies to provide excellent cavity adaptation during placement.



## + Low Shrinkage Stress

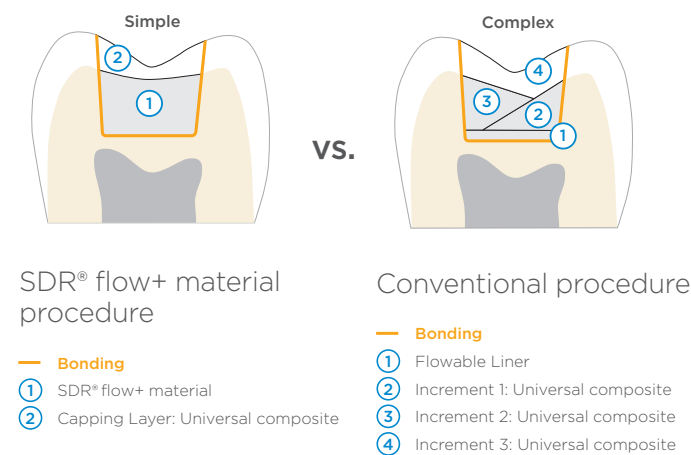
During light-cured polymerization, resin monomers are in chaotic movement as they begin to form the polymer matrix. SDR® technology enables the formation of a more relaxed network, minimizing the build-up of stress. This minimizes the risk of gap formation through stress during polymerization and ensures excellent adaptation even in 4mm bulk placement.



## + Efficiency

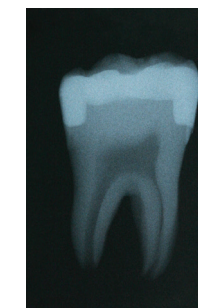
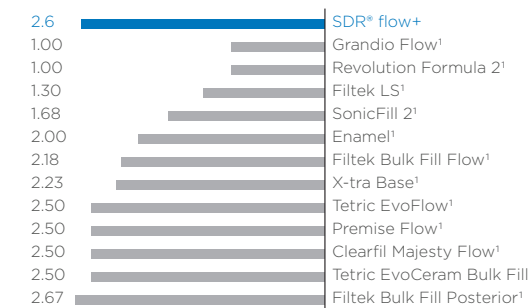
SDR® bulk fill technology allows the bulk fill material to be applied in 4mm increments without an additional liner. This automatically decreases procedural time and inventory.

- Self-levels for up to 40% time savings over classic layering technique
- Is used without an additional liner
- Self-levels and does not require additional manipulation to adapt



## + Radiopacity

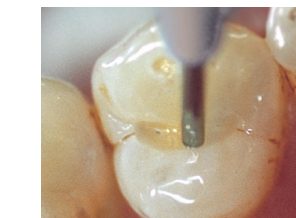
The ADA Professional Product Review recommends that the radiopacity of flowable composite materials be greater than or equal to enamel, SDR® flow+ material exceeds the radiopacity of enamel<sup>2</sup>.



<sup>1</sup> Not a registered trademark of Dentsply Sirona  
<sup>2</sup> Data on file

## + More Indications

Due to its unique chemistry and improved wear resistance, SDR® flow+ material is approved to be used in Class III and Class V restorations where a capping agent wouldn't be used. This expands our capabilities to include more restoration classes than many other flowable materials.



**+Pit & Fissure Sealing**  
 The thin compula allows the material to flow easily into all fissures for highly precise application.



**+Core Build-Up**  
 The 4mm depth of cure of SDR® flow+ material make it a fast and easy alternative for core build-up. It handles instrumentation and shaping with ease.

Dentsply Sirona internal picture

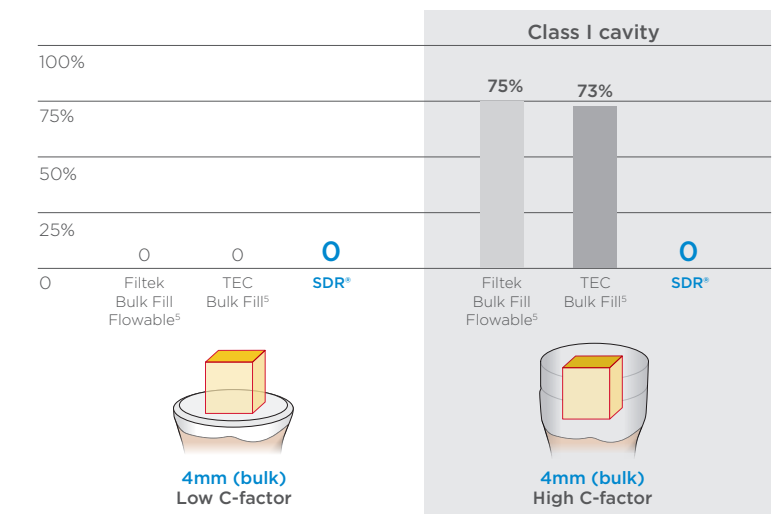
Dr. van der Vyver

## + Reliable Adhesion

Endodontic cavities are particularly challenging for bulk fill composites, as most are very deep Class I like cavities. This maximizes shrinkage stress potential, indicated by a high C-factor. Studies indicate that when high-C-factor cavities are filled in bulk, the choice of the composite is an important element to avoiding adhesive debonding.<sup>3</sup>

SDR® flow+ material with SDR® technology can deal with high C-factor cavities leading to a tight coronal seal even for post-endodontic cavities.

Pre-test failures [%] during micro tensile bond strength testing to cavity floor<sup>3</sup>

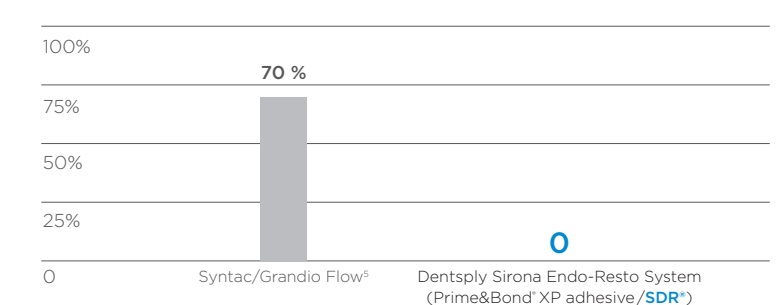


## + Tight Seal

"SDR® flow+ material ensures a tight seal of the endodontic access cavity - an important factor for long-term endodontic treatment success."

Prof. Dr. Schirmmeister,  
 University of Freiburg, Germany

Relative number [%] of specimen showing leakage into root canal<sup>4</sup>



<sup>3</sup> Van Ende A et al., 2016: Effect of Bulk-filling on the bonding efficacy in Occlusal Class I Cavities. J Adhes Dent.; 18(2):119-24  
<sup>4</sup> Internal Report Ebert J, Study No 14 1408 (2011). Available upon request, see contact details  
<sup>5</sup> Not a registered trademark of Dentsply Sirona