

All indications. All etching methods.

Although the strongest bond in the mouth is to etched enamel, over-etching dentin is a leading cause of post-op sensitivity. Prime&Bond elect® Universal Dental Adhesive gives you the flexibility to use the etching technique that is most appropriate for the situation.

Total-Etch

Prime&Bond elect® adhesive is ideal in clinical situations where there is a large amount of enamel, such as veneers, class III, and class IV restorations. With a total-etch application, Prime&Bond elect® adhesive creates a strong bond on enamel.

Selective-Etch

Prime&Bond elect® adhesive virtually eliminates the risk of sensitivity on dentin by minimizing exposure to etchant. The higher viscosity achieved with Caulk® 34% Tooth Conditioner Gel gives you better application control at the enamel-dentin junction.

Self-Etch

When using Prime&Bond elect® adhesive in a self-etch procedure like a crown prep, there's no need to compromise bond strength or to risk sensitivity. Prime&Bond elect® adhesive assures virtually no sensitivity and creates high bond strength.

Prime&Bond elect® Universal Dental Adhesive

ORDERING INFORMATION

- | | |
|--------|---|
| 634602 | INTRODUCTORY KIT
1 Bottle Prime&Bond elect® Adhesive (5mL)
1 Syringe Caulk® 34% Tooth Conditioner Gel (3mL)
25 Applicator Tips
50 Flocked Applicator Tips
1 Dispensing Well |
| 634601 | BOTTLE REFILL
1 Bottle Prime&Bond elect® Adhesive (5mL) |
| 634604 | UNIT DOSE PACKAGE
50 Unit Doses
2 Unit Dose Holders
50 Flocked Applicator Tips |
| 634603 | UNIT DOSE PACKAGE
100 Unit Doses
3 Unit Dose Holders
100 Flocked Applicator Tips |
| 607100 | COMBO KIT
1 Syringe Calibra® Ceram Cement (4.5g)
10 Mixing Tips
1 Bottle Prime&Bond elect® Adhesive (5mL)
25 Flocked Applicator Tips |
| 646125 | CAULK 34% TOOTH CONDITIONER GEL - SYRINGES
2 Syringes (3mL each)
25 Applicator Tips |
| 646100 | CAULK 34% TOOTH CONDITIONER GEL - BOTTLES
2 Bottles (6mL each) |



Prime&Bond elect® Universal Dental Adhesive

The universal adhesive that's more than strong.

*Data on file.
©2017 Dentsply Sirona. All rights reserved.
LEPBelect®



THE DENTAL
SOLUTIONS
COMPANY™





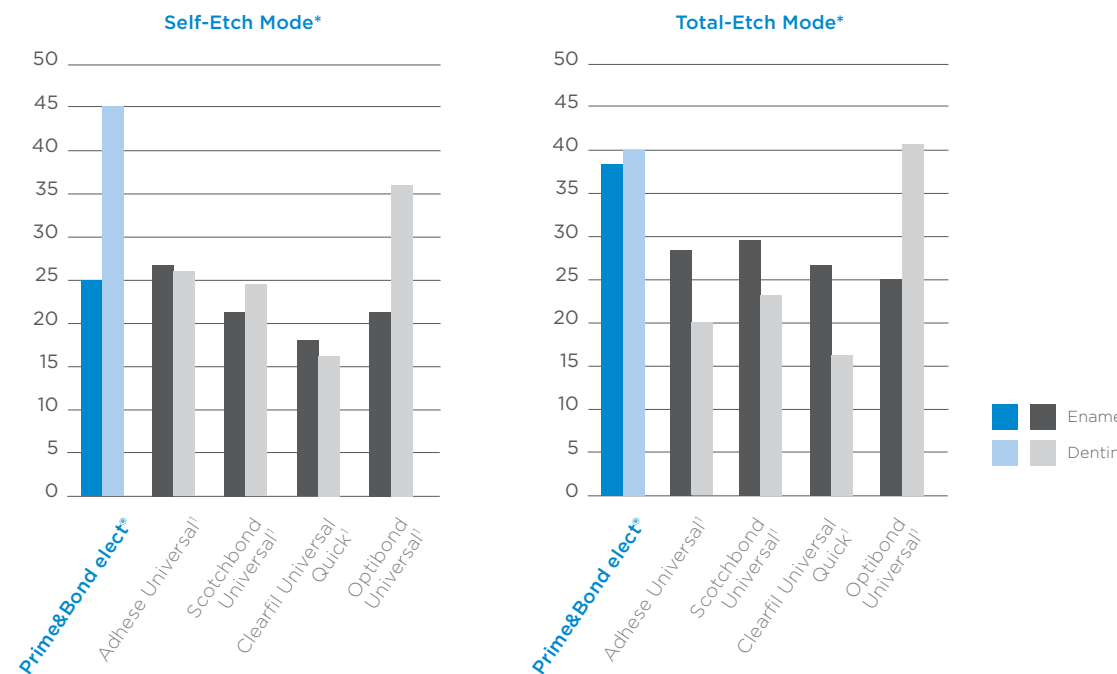
There's more in this little drop than muscles.

A good adhesive is not measured by bond strength alone. In fact, many dentists consider low film thickness and viscosity as equally important. Prime&Bond elect® Universal Dental Adhesive's clinically proven PENTA (dipentaerythritol penta acrylate monophosphate) technology chases away water, enabling a strong bond with less sensitivity. It also features excellent bond strength and cures clear. **It's time to think beyond the bond.**

- Excellent bond strength in all indications
- Clinically proven PENTA technology
- Low film thickness
- Cures clear
- Excellent performance with Calibra® Ceram Resin Cement

Excellent Bond Strength

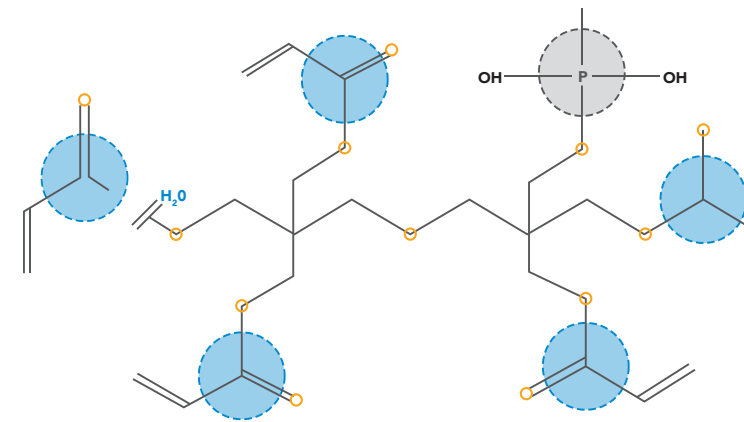
Prime&Bond elect® adhesive maintains impressive mechanical stability of the resin by limiting the amount of water absorbed by the adhesive. Too much water can degrade the bond over time, causing it to fail prematurely. Consistent bond strength across varied moisture levels is paramount for a durable bond.



* Source: Internal data

Clinically Proven PENTA Chemistry

Prime&Bond elect® adhesive is built on the chemistry of one of the world's most widely used and clinically tested adhesives. PENTA chemistry provides a **unique micromechanical and chemical bond** for long-term success. Not only does the chemistry use **acetone** to chase water from the prep, but unlike the MDP adhesive monomer which contains just one vinyl group, PENTA contains **five vinyl groups** for locking into resin. Because of this structural advantage, adhesives with PENTA are better able to resist degradation of the bond.

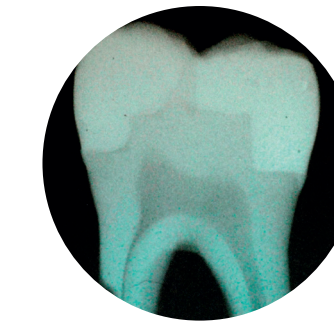


Characteristics of PENTA
PENTA - Dipentaerythritol-Pentaacrylate Phosphate

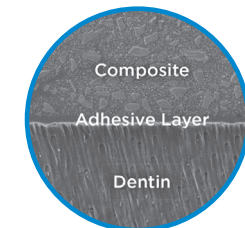
* Not a registered product of Dentsply Sirona.

Low Film Thickness

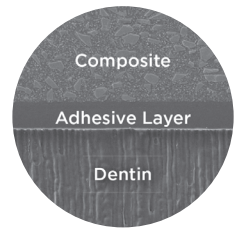
In direct restorations, thick adhesives can pool in the corners of the proximal box. These adhesive pools can show up as translucent areas on a radiograph, which can easily be mis-diagnosed as a void, gap, or secondary decay, leading to unnecessary replacement. Thicker adhesives may also change the crown prep geometry, impacting crown fit. Prime&Bond elect® adhesive provides a lower film thickness of resin-dentin and resin-enamel interfaces.



Left Side: Restorations placed with competitive adhesive
Right Side: Restoration placed with Prime&Bond® elect®



Prime&Bond elect®



Scotchbond Universal¹

¹Not a registered product of Dentsply Sirona.

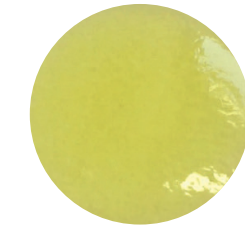
* Source: "Film thickness FE-SEM evaluation," Andre F. Reis, DDS, MS, PhD

Cures Clear

The clear colour of Prime&Bond elect® adhesive helps to ensure that the **esthetic outcome** of your restoration is not compromised.



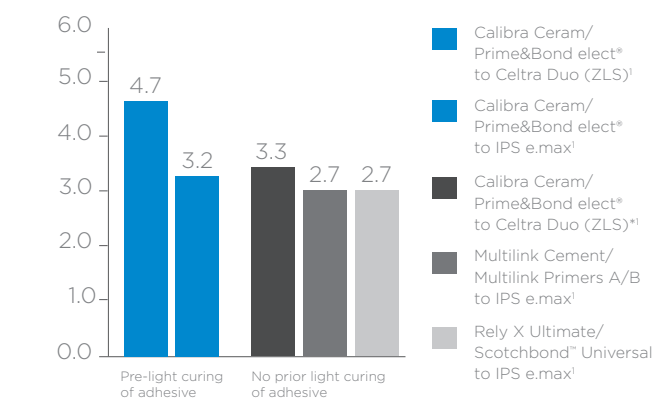
Prime&Bond elect®



Scotchbond Universal¹

Pair with Calibra® Ceram Adhesive Resin Cement

Put it all together with one-step curing. When Prime&Bond elect® adhesive and Calibra Ceram cement are paired together, there's **no need for a separate activator**.



Test: Crown-pull Bond Strength Testing. Ceramics were treated with 5% HF and silanated. All adhesives were used in self-etch mode. All cements were self-cured except for the group with optional light-curing through crown. Artificial aging 10,000 thermocycling (5-55°C). Source: Prof. John Burgess.

¹ light curing of adhesives through crown
¹Not a registered product of Dentsply Sirona.

