

Now Palodent® Matrix Systems  
cover all your Class II needs and more.



Palodent® Plus  
Sectional Matrix System

**NEW!** Palodent® 360  
Circumferential Matrix System

Accurate contacts and contours at your fingertips.

# A tight seal. Predictable contacts. The right contours for clinical success.

97%

of clinicians say that achieving **proper isolation** of a Class II cavity is difficult in at least 1 out of 10 cases.<sup>1</sup>

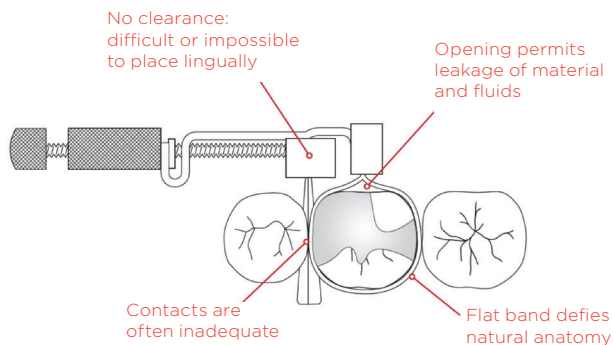
70%

of clinicians find **contact creation** to be the most challenging part of a Class II restoration.<sup>2</sup>

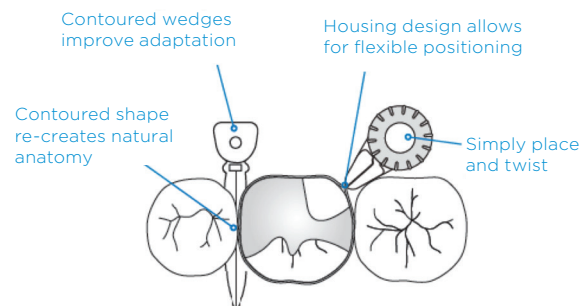
Palodent® Matrix Systems help you achieve reliable isolation with a tight gingival seal. With Dentsply Sirona's advanced designs, recreating accurate interproximal contacts has never been so easy and predictable. And the anatomically shaped matrices deliver natural contours for better clinical outcomes—without bulky equipment, obstructions to your working room, or the need for extensive interproximal finishing.



## Tofflemire™ Circumferential Matrix



## Palodent® 360 Circumferential Matrix



1. Dental Learning Systems, Direct Restoratives Survey, May 2016. N=143  
 2. DentalTown (2012). Restorative Dentistry. Monthly Poll: What is the most challenging part of Class II Restoration?  
 3. Owens BM, Phebus JG, An evidence-based review of dental matrix systems, "General Dentistry," September/October 2016

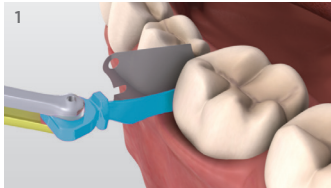
# Palodent® Plus

## Sectional Matrix System

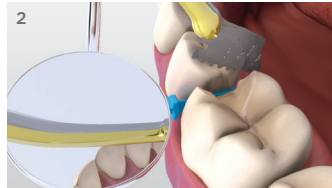
Easily achieve natural contours and tight contacts for improved outcomes. The Palodent® Plus system is ideal for composite restoration of most two-surface proximal Class II cavities.



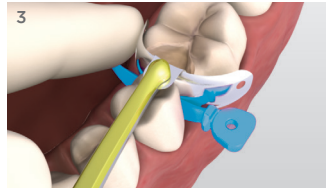
### 4 steps to better Class II's:



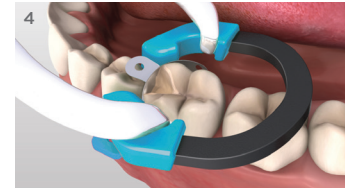
1 Using the Pin-Tweezers, place a Palodent® Plus Wedge or WedgeGuard firmly from the lingual or buccal side and proceed with prep.



2 After prep, support Wedge with mirror or dental instrument while using Pin Tweezers to detach the shield.



3 Place Palodent® Plus Matrix with Pin Tweezers.

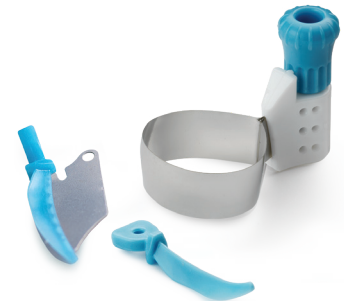


4 Place the Palodent® Plus Ring on top of the wedge to provide separation.

# Palodent® 360

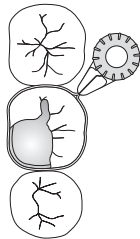
## Circumferential Matrix System

Provide natural contours and optimal contacts with a **simple twist of the fingers**—no awkward retainers or applicators required. Choose the Palodent® 360 system for Class II cases where a sectional matrix can't be used and for single-unit crown core build-up procedures.

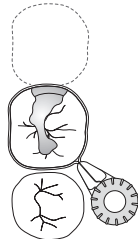


### Use the Palodent® 360 system for:

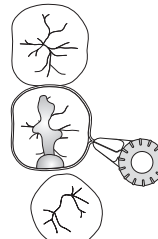
Missing cusp



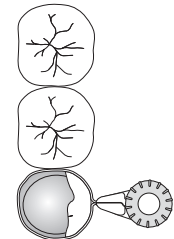
Missing adjacent tooth



Misaligned tooth



Tooth isolation for core build-up



**PLACE**



**TWIST**



**DONE**



**TIP**

To seat in tight interproximal spaces, pre-wedge using a Palodent® Plus retaining ring or a wooden wedge to temporarily create the required space.

# Ordering Information

**NEW!**

## 659600 Palodent® 360 Circumferential Matrix System



- Palodent® 360 Circumferential Matrices - 24 each 5.5mm bands
- 100 Palodent® Plus Sectional Matrices - 25 each size: 3.5mm, 4.5mm, 5.5mm, 6.5mm
- 75 Palodent® Plus Wedges - 25 each size: Small, Medium, Large
- 30 Palodent® Plus WedgeGuards - 10 each size: Small, Medium, Large
- 1 Palodent® Plus Universal Ring; 1 Palodent Plus Narrow Ring
- 1 Palodent® Plus Forcep; 1 Palodent Plus Pin Tweezer

### Matrix Refills

- 659601 **4.5mm (48)**
- 659602 **5.5mm (48)**
- 659603 **6.5mm (48)**

## 659670 EZ Coat Intro Kit



- 100 EZ Coat Matrices - 25 each size: 3.5 mm, 4.5 mm, 5.5 mm,
- 6.5 mm 75 Wedges - 25 each size: Small, Medium, Large
- 30 WedgeGuards - 10 each size: Small, Medium, Large
- 1 Universal Ring; 1 Narrow Ring; 1 Forceps; 1 Pin Tweezers

## 659760 Universal Ring (light blue)

- Nickel-titanium for strength and memory
- Stackable for multiple restorations
- V-shaped, glass-fiber reinforced plastic tines



## 659770 Narrow Ring (dark blue)

- Tines set closer together for optimal separation on smaller teeth
- Up to 4kgs of separating force even on premolars

## EZ-Coat Matrices (5 sizes)

- Ultra-thin, non-stick coating makes matrix removal easier and reduces light reflection, improving depth of field for better visibility
- Greater curvature for anatomical precision and less interference with ring placement
- Sizes color-coded for easy identification



### Matrix Refills EZ Coat

- 659610 **Size 3.5 mm (50)**
- 659620 **Size 4.5 mm (50)**
- 659630 **Size 5.5 mm (50)**
- 659640 **Size 5.5 mm (90)**
- 659650 **Size 6.5 mm (50)**
- 659660 **Size 7.5 mm (50)**



## Matrices (5 sizes)

- Pronounced marginal ridge for accurate anatomy
- Gingival apron is optimally shaped to prevent gaps in gingival-axial corner

### Matrix Refills

- 659710 **Size 3.5 mm (50)**
- 659720 **Size 4.5 mm (50)**
- 659730 **Size 5.5 mm (50)**
- 659740 **Size 5.5 mm (100)**
- 659750 **Size 6.5 mm (50)**
- 659860 **Size 7.5 mm (50)**

## Wedges (3 sizes)

- Compresses on entry and flares upon exit for easy placement and seal
- Hollow underside allows placement of second wedge from opposite side and protection of the papilla



### 659780 Small (100)

### 659790 Medium (100)

### 659800 Large (100)

## Wedgeguards (3 sizes)

- Guard detaches after prep, leaving the wedge in place
- Facilitates faster and easier cutting of cavity and lowers risk of interproximal damage to adjacent tooth



### 659830 Small (50)

### 659840 Medium (50)

### 659850 Large (50)

## 659820 Pin Tweezers

- Pin-in tip positively grips hole in matrix and wedge for control
- Naturally closed position minimizes risk of dropping matrix band or wedge
- Built-in ball burnisher tip



## 659810 Forceps



To place an order, please call **1-877-393-3687** or visit [www.dentsplysirona.com](http://www.dentsplysirona.com)